

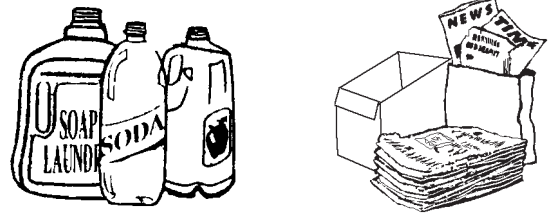
2010 CURBSIDE RECYCLING FOR WOBURN

WHAT CAN BE RECYCLED?

- ▲ **Chipboard** (cereal boxes, shoeboxes, etc.)
- ▲ **Newspapers/Inserts**
- ▲ **Magazines/Catalogs/Phone Books**
- ▲ **Office Paper/Junk Mail/Brown Bags**
- ▲ **Flattened Corrugated Cardboard** Up To 30" x 30"
- ▲ **Glass Bottles and Jars**
- ▲ **Aluminum and Steel (Tin) Food And Beverage Cans**
- ▲ **Plastic Bottles and Jars** Marked ♻️ Thru ♻️
- ▲ **Milk and Juice Cartons and Juice Boxes**
- ▲ **NO Broken Glass, Light Bulbs, Window, Dishes, or Pyrex**
- ▲ **NO Paint or Aerosol Cans, Motor Oil Containers**
- ▲ **NO Grocery bags or Styrofoam**
- ▲ **NO Construction Debris**

HOW TO RECYCLE:

Woburn offers single stream recycling. You do not have to separate. All your recyclables can be placed in one recycling container.



Residents may use any container for recycling as long as it is clearly labeled "RECYCLE". Recycling stickers (optional) are available at the Woburn Board of Health.

TRASH, RECYCLING & YARD WASTE MUST BE OUT CURBSIDE BY 7AM ON YOUR TRASH DAY.
Construction Debris of any kind is not allowed!



- ▲ Christmas Trees will be picked up Jan. 4-8 and Jan. 11-15 on trash day. Please ensure it is not buried under snow or ice.
NO BAGS AND NO DECORATIONS.



- ▲ Call Waste Management for appliance and CRT screens pickup by 3pm Thursday at 781-933-2113 to schedule Friday pick up. (note: residents are not required to use Waste Management for appliances and CRT screens pick-up)

- Appliances**
(stoves, washers, dryers, etc.) \$13 each
- Freon Bearing Appliances**
(refrigerators-doors must be removed, ac, etc.) \$20 each
- TV/Computer Monitors** \$25 each

- ▲ **COLLECTION SCHEDULE**
 Recycling containers are collected **EVERY OTHER WEEK** on regular trash collection day. Neighborhoods have been assigned white or orange weeks to help clarify when recyclables will be collected. For information concerning your trash or recycling schedule, contact the Board of Health at 781-897-5920.

2010 YARD WASTE COLLECTION (on your regular trash day).

Apr. 20-24*	Jul 19-23	Oct. 18-22
May 17-21	Aug 23-27	Nov. 8-13*
Jun 21-25	Sept. 20-24	Nov. 22-27*
* Holiday Schedule		
		Dec. 6-10



Use yard waste bags or barrels without lids. **NO PLASTIC BAGS.** Cut branches to 3 feet in length, no larger than 2 inches in diameter, bundle & tie.

HOLIDAY SCHEDULE

If a collection day falls on a holiday, that day's collection and remaining collections for the week are delayed one day. **HOLIDAYS ARE CIRCLED.**

MISSED COLLECTIONS

If your recyclables, trash or yard waste has not been picked up, call Waste Management at 781-933-2113 within 24 hours.

2010 BIN COLLECTION

WHITE WEEK

ORANGE WEEK

○ OBSERVED HOLIDAYS

JANUARY 2010						
Su	Mo	Tu	We	Th	Fr	Sa
					1	2
3	4	5	6	7	8	9
10	11	12	13	14	15	16
17	18	19	20	21	22	23
24	25	26	27	28	29	30
31						

FEBRUARY 2010						
Su	Mo	Tu	We	Th	Fr	Sa
	1	2	3	4	5	6
7	8	9	10	11	12	13
14	15	16	17	18	19	20
21	22	23	24	25	26	27
28						

MARCH 2010						
Su	Mo	Tu	We	Th	Fr	Sa
	1	2	3	4	5	6
7	8	9	10	11	12	13
14	15	16	17	18	19	20
21	22	23	24	25	26	27
28	29	30	31			

APRIL 2010						
Su	Mo	Tu	We	Th	Fr	Sa
				1	2	3
4	5	6	7	8	9	10
11	12	13	14	15	16	17
18	19	20	21	22	23	24
25	26	27	28	29	30	

MAY 2010						
Su	Mo	Tu	We	Th	Fr	Sa
						1
2	3	4	5	6	7	8
9	10	11	12	13	14	15
16	17	18	19	20	21	22
23	24	25	26	27	28	29
30	31					

JUNE 2010						
Su	Mo	Tu	We	Th	Fr	Sa
	1	2	3	4	5	
6	7	8	9	10	11	12
13	14	15	16	17	18	19
20	21	22	23	24	25	26
27	28	29	30			

JULY 2010						
Su	Mo	Tu	We	Th	Fr	Sa
			1	2	3	
4	5	6	7	8	9	10
11	12	13	14	15	16	17
18	19	20	21	22	23	24
25	26	27	28	29	30	31

AUGUST 2010						
Su	Mo	Tu	We	Th	Fr	Sa
	1	2	3	4	5	6
7	8	9	10	11	12	13
14	15	16	17	18	19	20
21	22	23	24	25	26	27
28	29	30	31			

SEPTEMBER 2010						
Su	Mo	Tu	We	Th	Fr	Sa
			1	2	3	4
5	6	7	8	9	10	11
12	13	14	15	16	17	18
19	20	21	22	23	24	25
26	27	28	29	30		

OCTOBER 2010						
Su	Mo	Tu	We	Th	Fr	Sa
					1	2
3	4	5	6	7	8	9
10	11	12	13	14	15	16
17	18	19	20	21	22	23
24	25	26	27	28	29	30
31						

NOVEMBER 2010						
Su	Mo	Tu	We	Th	Fr	Sa
	1	2	3	4	5	6
7	8	9	10	11	12	13
14	15	16	17	18	19	20
21	22	23	24	25	26	27
28	29	30				

DECEMBER 2010						
Su	Mo	Tu	We	Th	Fr	Sa
			1	2	3	4
5	6	7	8	9	10	11
12	13	14	15	16	17	18
19	20	21	22	23	24	25
26	27	28	29	30	31	

RECYCLING INFORMATION

CITY OF WOBURN

Dear Woburn Resident,

Thank you for your efforts and cooperation. Participation in Woburn's curbside recycling program by all residents living in 1-3 unit homes, condominiums and townhouses will help our community divert many tons of trash from our waste stream annually for reuse in new products.

On the reverse side you will find a recycling reference chart and collection calendar for you to post in a convenient location.

REMEMBER...

- ▶ Rinse all containers clean.
- ▶ For recycling stickers to place on your container, please call 781-897-5920.
- ▶ Woburn encourages home composting of yard waste.
- ▶ No construction debris: (doors, windows, sheetrock, 2x4s, etc.)

ITEMS PERMITTED IN REGULAR TRASH:

- ▶ Regular household trash
- ▶ Carpet (cut to 3', rolled and tied)
- ▶ Bulk Item (i.e. furniture) - one allowed per week

Household hazardous waste CANNOT be put in with trash.
Example: Liquid Paint, Paint Thinners, Pool Chemicals, Wood Stains, Varnishes, etc.

Call the Woburn Board of Health for disposal instructions,
 781-897-5920 or visit the Board of Health Website at
www.cityofwoburn.com under public safety.

PRINTED ON RECYCLED PAPER.



Woburn Board of Health
 10 Common Street
 Woburn, MA 01801
 781-897-5920

Presorted Standard
 US POSTAGE
PAID
 BILLERICA, MA
 Permit #3

2010

Please Keep
 for Reference

Trash & Recycling Calendar "2010"

ADDITIONAL RECYCLING INFORMATION



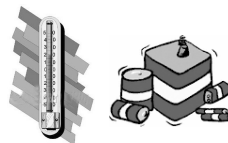
RESIDENTIAL WASTE OIL

Where: Murphy's Waste Oil
 252 Salem Street
 Woburn, MA 01801
Time: 1st Saturday of the month
 8 a.m. to 12 noon (except
 when holiday falls on a
 weekend.)
 Accept waste oil, oil filter,
 and anti-freeze



CAR TIRES/BATTERIES

Where: City Hall Parking lot
Time: 3rd Saturday of March,
 June, September and
 December.
 8 a.m. to 12 noon
 Tires on or off rims \$1.00 ea.
 Automotive batteries \$1.00 ea.
 Service provided by
 Holland Used Auto Parts.



MERCURY BEARING WASTES

Where: City Hall Parking lot
Time: 3rd Sat. of March, June, Sept.
 and Dec. 8 a.m. to 12 noon
 fluorescent lighting,
 thermometers, thermostats,
 and button batteries.
 Alkaline batteries can go out with regular trash.
 All recyclable batteries are accepted at
 BatteriesPlus at 173A Cambridge Rd.



PROPANE TANKS

Where: Woburn Tire & Auto
 193 Main Street
 Woburn, MA 01801
Time: M-F: 7:30 - 5 p.m.
 Sat.: 7:30 - 12.30 p.m.
 1lb - \$3.00, 20lb - \$6.00
 30lb - \$8.50, 40lb - \$11.00
 100lb. - \$28.00

Illegal Dumping

If you see any illegal dumping or other environmental hazards occurring in your neighborhood, **please call your local Board of Health** or the DEP Environmental Strike Force at 617-556-1000.

REMEMBER, YOU HAVEN'T TRULY RECYCLED UNTIL...

you buy products made from materials you place at the curbside or drop-off. For more information on recycling in the City of Woburn call: 781-897-5920 or go to our website @ www.cityofwoburn.com